

STARS



The air transport industry has historically connected dedicated, non-intelligent terminals to a specific host application. As these host applications grew in numbers, so did their workstations - often resulting in several workstations accessing different hosts, with different protocols.

STARS from SITA is an integrated hardware and software solution designed to meet user needs right through to the 21st century. It offers users the opportunity to use modern, cost efficient terminal equipment - Personal Computers (PCs) acting as Intelligent Work Stations.

Different services can now be accessed simultaneously, regardless of the location of the host computer or operating system/protocol used.

The requirements for additional remote terminals and their associated expensive maintenance overheads are diminished. Dedicated terminal hardware is a thing of the past.

STARS offers unrestricted room for expansion - quickly, inexpensively and flexibly.

STARS

Single Terminal Access Real Time Services.

SITA

Benefits

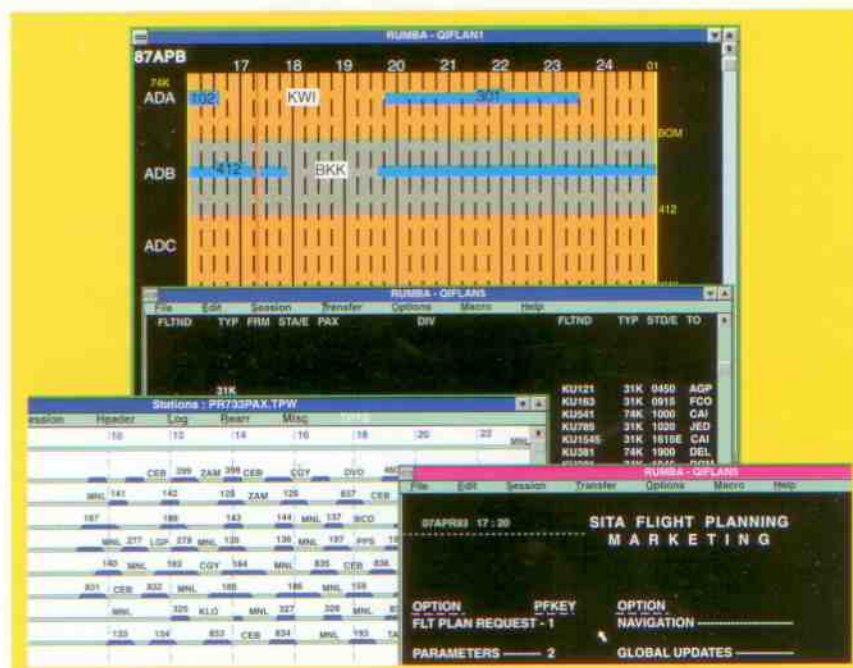
Traditional mainframe interfaces are not renowned for being very user friendly, but with STARS, PCs can access all the SITA services through the industry standard MS Windows 3.0, or 3.1 graphical user interface.

With the added simplicity of the mouse, you can click on buttons to run transactions, set up macros and even run Windows in your own language.

The PC has become the essential airline office tool of the 90's, with PC Workstations replacing remote terminals. Thanks to STARS, the PC can now fulfill a more useful role, allowing users to not only access their own local PC software (such as Spreadsheets and Word Processing), but all of SITA's mainframe services as well.

STARS makes workstations more productive and more cost effective. Furthermore, PCs are available for the price of yesterday's remote terminals.

An additional benefit is STARS' ability to load pre-assigned keyboard configurations with each session. This results in just one keyboard layout being used for all applications, making training much easier and system usage more cost beneficial.



STARS and your Company Strategy

STARS and SITA can work hand in hand with individual Data Processing (DP) departments. As your company expands, it is easy to add more and more users of existing SITA services. Alternatively other SITA services can be added without having to change hardware or allocate new connections to the network.

Complete control over hardware can be retained, or you may have the equipment installed and maintained by ITS; SITA will provide full support for STARS.

Interconnectivity

STARS allows access to your in-house mainframe or mini-computer applications as well as SITA DP services. If you need to access the SITA Cargo system, the Gabriel II Reservations system, Crew Management, Flight Planning or even if you wish to make a hotel booking, with STARS you can simultaneously access any of the SITA services at the click of a mouse button.

Travel Agents using the Atlanta based GETS system can also enjoy all the benefits of STARS. As a complement to all the available GETS features, STARS allows access to an extended number of service providers, national and international.



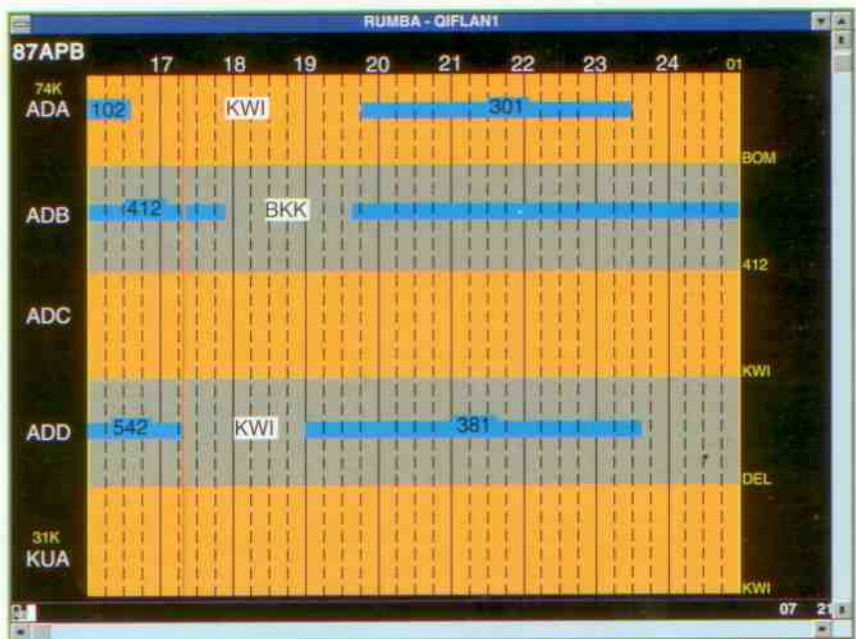
How STARS works

SITA's host computers, based in Atlanta and London, are connected through the SITA Network to a PC Gateway which can either stand-alone or function on a Local or Wide-Area Network (LAN or WAN).

The network connection uses the X.25 protocol. Only one connection is needed for each WAN or LAN, regardless of the number of services running.

This PC Gateway is equipped with an ITS supplied X.25 Eicon Card, plus additional gateway software. The individual PC Workstations do not require any special hardware, but need appropriate terminal emulation software to cater for the different service(s).

These emulators handle individual in-house applications. The emulators run from MS Windows.



Hardware Requirements

Any IBM or IBM compatible PC fitted with a 386 processor (or better) may be used. If you are considering a PC type not already tested and approved, SITA will test, free of charge, specific PCs for compatibility with the SITA network and recommended software. SITA does, however, recommend that your PC has 4Mb of RAM, a hard disk of 50Mb or more, and a color VGA screen.

Similarly, if you are using a local network, then SITA can also advise you on the suitability of the network and LAN topology for running STARS.

MS-WINDOWS is a registered trademark of the Microsoft Corporation.

For more Information

SITA

Contact the Marketing Director
ATLGMXS (for Atlanta services)
or

QIFGMXS (for London services)

Alternatively, contact your SITA Business Development Manager.

© SITA

93/VM.SD-QIF-002(1)

June 1993. Specification subject to change without prior notice

STARS



**A Presentation to
23rd C.S.U.M.**

by
Tony Green
22nd September 1993

SITA

What is S.T.A.R.S ?

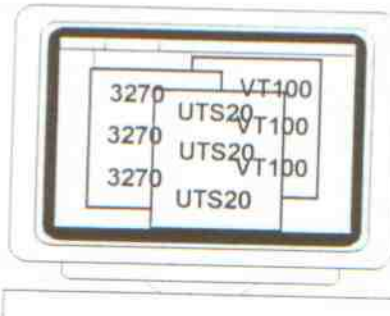
*S.T.A.R.S. is a concept that enables
multiple access to
multiple services which
run on varying hosts,
all from a single terminal (PC).*

SITA

STARS

Multiple Hosts

- ✦ IBM - 3270
- ✦ Prime - VT100/VT220
- ✦ Unisys - UTS 20

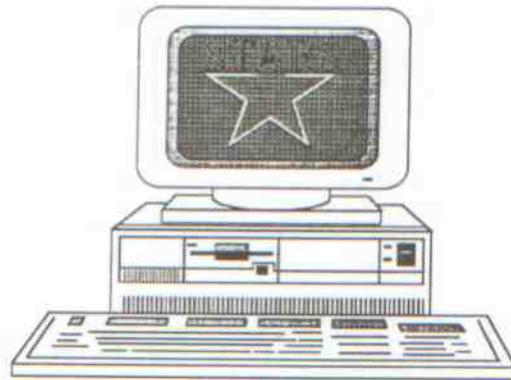


SITA

STARS

NOTES

Single
Terminal
Access
Real-time
Services



SITA

STARS

Various Environments

★ Local Area Networks

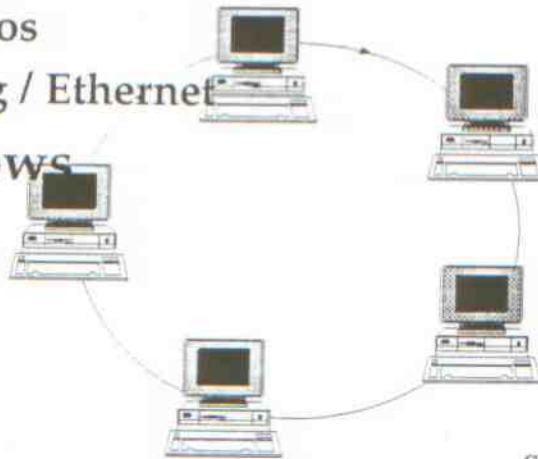
- ☆ IPX / Netbios
- ☆ Token Ring / Ethernet

★ MS Windows

- ☆ 3.0 / 3.1

★ DOS

- ☆ 3.3+



SITA

STARS

NOTES

How

S.T.A.R.S

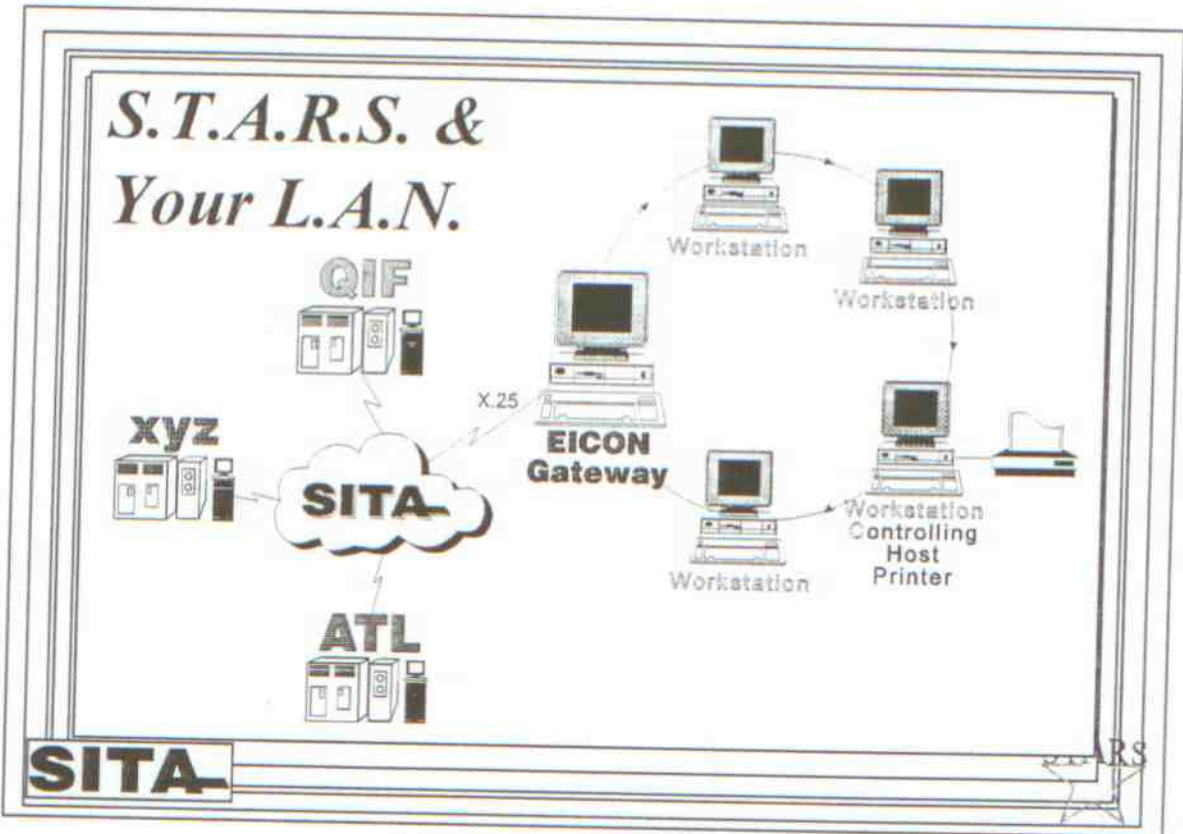
- ✧ Eicon X.25 Card is the key
- ✧ 9600+ bps synchronous connex
- ✧ Gateway PC
I Standalone or LAN
- ✧ Workstation PC
- ✧ Printers



SITA

STARS

NOTES



NOTES

Why S.T.A.R.S. For Cargo?

- ✧ Easy access to other services
- ✧ Multiple sessions on same terminal
- ✧ Windows functionality
- ✧ LAN Functionality
- ✧ Simple FTP
- ✧ Towards IWS



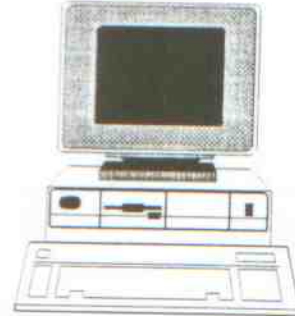
SITA

STARS

NOTES

Hardware Requirements

- ✧ Eicon X.25 Card
- ✧ 100% IBM Compatible PC (PC/MCA)
- ✧ 386 or faster processor
- ✧ 4mb RAM
- ✧ 80mb Hard Disk
- ✧ VGA Screen



SITA

STARS

NOTES

Existing S.T.A.R.S. Customers

- ✧ MS Cairo 50 PCs
- ✧ KU Kuwait 40 PCs
- ✧ RJ Amman 30 PCs
- ✧ DHL Brussels 22 PCs
- ✧ SU Moscow; PR Manilla
MA Budapest; OK Prague
EK Dubai; GS Luton.

SITA

STARS

NOTES

Future S.T.A.R.S. Customers

- ✧ LO Warsaw 25 PCs
- ✧ TU Tunisia 20 PCs
- ✧ IR Tehran 15 PCs
- ✧ RG Rio; NG Vienna;
ZA Cairo;

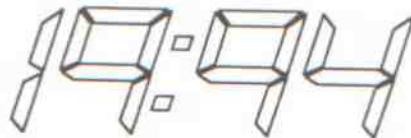
SITA

STARS

NOTES

S.T.A.R.S. - The Future

- ✧ X.28 Dial up
- ✧ P1024b support
- ✧ GUI for all SITA Services
- ✧ Business partnership with Eicon



SITA

STARS

NOTES

S.T.A.R.S. - Your Strategy

- ★ Ease of expansion
- ★ Easy to connect to other services
- ★ X.25
- ★ Full support from SITA Group



SITA

STARS

NOTES

S.T.A.R.S.

SITA Contacts

- ✧ QIFTWXS - Tony Green
- ✧ QIFGIXS - Don Brook
- ✧ QIFGMXS - **SITA** Marketing



SITA

STARS

NOTES

